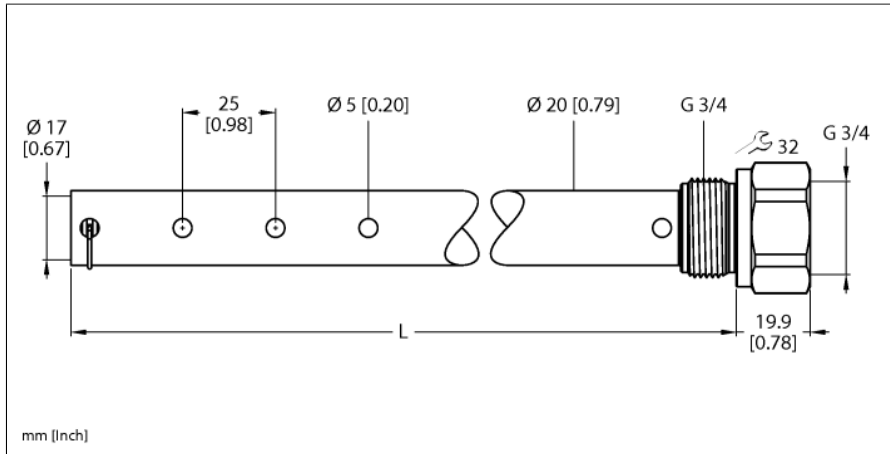


# Accessories

## Coaxial Tube

### For LS-5 Series

#### LSCT-51-0200



- Coaxial tube LS-5 level sensors
- Process connection G3/4"
- Tube length 200 mm

Type	LSCT-51-0200
ID	100001872
Remark to product	Attention: Coaxial tubes (accessories) are only available for LS-51 level sensors with process connection G3/4".

Application area	liquids
Probe length (L)	200 mm

<b>Mechanical data</b>	
Material	Stainless steel, 1.4571
Process connection	G 3/4"
Sealing material	Aramid fibers, bound with NBR

Included in delivery	Centering set for LSCT-...
----------------------	----------------------------

#### Functional principle

The level sensors of the LS-5 series work according to the principle of the guided microwave. The so-called Time Domain Reflectometry (TDR) is used. This method emits an electromagnetic wave along the probe. When the wave reaches the medium, it is partially reflected due to the dielectric constant compared to air. The electromagnetic wave is picked up again by the sensor and the distance to the liquid can now be determined via the transit time.

## Accessories

Type code	Ident no.		Dimension drawing
LSAB2	100016515	PTFE centering star for mounting probes in the LS-5 product series in LSCT-xx-xxxx coaxial tubes	